

# THE GAME

WIN YOUR BONUS



# There's plenty of opportunity, it's yours to be won!

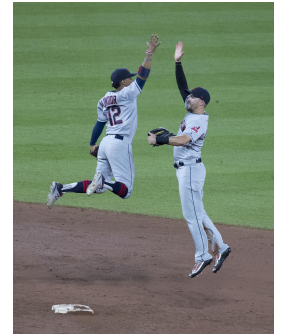


Earn bonuses as high as **\$350 USD per month!**

Achieve your targets and win 1% of the monthly revenue of each property.  
Ranging **between \$25 and \$75 per property, per month!**

Exceed your target and win 2% of the monthly revenue of each property. per month! Ranging **between \$90 and \$140 per property, per month!**

OPPORTUNITY



# How it works.

1. Use the '**Revenue and Calendar management techniques**' to fill the calendars with great bookings, for a high price with lovely guests and you'll achieve your bonuses.
2. I have set the bonuses to a realistic target, so there is a good chance you will win each month. The better you are at playing **THE GAME** the more you'll win each month.
3. You need to keep the '**MINI MAINFRAME**' and '**OCCUPANCY**' files up to date, so that we can keep score.



# THE SCORE!

To keep an eye on the score we have a google sheets file which automatically updates each month.

<b>LDN</b>	Current Revenue	Target	Advanced Target	Winnings for reaching your target	Winnings for reaching your advanced target
BRB	£2,140	£2,254	£2,589	£32	£23
WS70	£3,953	£3,660	£4,113	£37	£74
KTR	£2,785	£2,520	£2,940	£25	£30
SAR	£4,812	£4,112	£5,516	£21	£22
CR1	£5,217	£5,222	£5,868	£52	£106
Total:	£14,601	£17,768	£21,026	£158	£254
			<b>LDN Bonus:</b>	<b>\$101</b>	<b>\$162</b>



Lydia De Vega

### The Rules

- 1 Keep the occupancy fully up to date, make sure each months totals display correctly, or receive a penalty of 2 weeks ban from THE GAME.
- 2 Keep the listings up to date or receive a penalty of one month ban from THE GAME.
- 3 Avoid double bookings or receive a penalty of one month ban from THE GAME.
- 4 Avoid red flag bookings or loose the next 2 months from THE GAME.
- 5 Keep the calendar fully up-to-date, failure to do so = 1 month from the game.

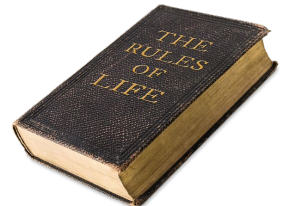
\* The bonus is earned only when the target (or advanced target) is achieved.

\*\* The monthly target is the total for all London properties together, not individual properties.

\*\*\* We calculate the targets based on last years figures.

# But be careful, there are some rules!

1. Keep the mainframe and occupancy fully up to date, make sure each months totals display correctly, or receive a penalty of 2 weeks ban from THE GAME.
2. Keep the listings up to date or receive a penalty of one month ban from THE GAME.
3. Avoid double bookings or receive a penalty of one month ban from THE GAME.
4. Avoid red flag bookings or loose the next 2 months from THE GAME.
5. Keep the calendar fully up-to-date, failure to do so = 1 month from the game.



**Good luck!**

**Remember to check everything,  
stay alert and chase the best  
bookings!!**



# THE GAME

**WE WIN TOGETHER...**

